

All of the listed items are available for exhibit purposes. They are the property of: Mary Welby von Thelen of Charlottesville, VA, Janelle Morton of Pasadena, CA, or Norah Lind of Manakin-Sabot, VA

\*indicates related items

## Lilian Westcott Hale

### *Paintings (13)*

1 Harriet Clark Westcott, in Mourning. Portrait of the artist's mother.

Oil on canvas, 35" H X 29.5" W; Framed: 41" H X 35.5" W.

\*Bracelets in painting

\*sketch of painting in artist's sketchbook

2 Lady in Regency Chair.

Oil on board, 30" H X 25" W; Framed: 33" H X 28" W.

3 Mark in Folly Cove. Portrait of the artist's grandson, ca. 1933.

Oil on canvas, 41.5" H X 29.5" W; Framed: 46" H X 34" W.

\*Photos of Mark by Toni Frissell during same period in same outfit

4 Mark in Overalls. Portrait of the artist's grandson. C.1938.

Oil on canvas, 49" H X 37" W.

\*Formal study

\*Preparation study of subject's feet in various positions

5 Mary Welby. Portrait of the artist's great granddaughter. 1962.

Oil on canvas, 27.5" H X 24" W; Framed: 35" H X 32" W.

\*Formal study

\*Dress worn by subject

6 Nancy Hale in Fur Coat, ca. 1943.

Oil on canvas, 30" H X 25" W; Framed: 38" H X 32" W.



\*Bracelet worn in painting

6 Nancy Hale. The artist's daughter, head and shoulders

Oil on canvas, 23.25" H X 17.75" W; Framed 26.75" H X 20.75" W.



8 Norah Hardin. The artist's great granddaughter, 1961.

Oil on canvas, 35.5" H X 25.5" W; Framed 41.5" H X 31.5" W

\*Formal study

\*Preliminary sketch in different position

\*Dress worn by subject

\*Chair in painting



9 Taylor Scott Hardin, Esq. The artist's son-in-law, 1927.

Oil on canvas, 7'10" H X 59" W. Winner of Altman Prize.

\*Small oil study

\**Town and Country* magazine with full-page image of portrait



10 Portrait of Elsa Diederich. Philip Hale's niece, ca. 1940.

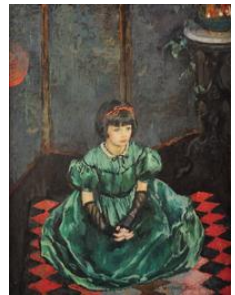
Oil on canvas, 40 H X 45" W.

11 Rosalie Janelle. Artist's great granddaughter, 1960.

Oil on canvas, 34.5" H X 24.25" W.

\*Formal study.

\*Dress worn by subject



12 Victoria (Girl in Green).

Oil on canvas, 47.5" H X 36" W; Framed: 52.5" H X 41" W.

\*Photograph of Lilian Westcott Hale with the finished painting.

13 The Box, 1962. The artist's last painting.

Oil on canvas,

\*The box



**Drawings (20)**

14 Kitty Hardin, wife of artist's grandson.

22" H X 19" W.



15 Girl's Head in Profile.

11.5" H X 9.5" W; Framed: 21.5 " H X 17.5" W.



16 Mark Hardin. ca. 1950.

29" H X 23" W.

17 Mark. Grandson of artist--profile of head and torso. Signed and dated: September 1934, and titled MARK.

24" H X 20" W; Framed: 25" H X 21.5" W.



18 Nancy (profile at about age 16).

18" H X 14" W; Framed: 24" H X 19" W.

19 Study for Mark with Overalls (head and torso only).

27.5" H X 20" W.



20 Mark with a Cold. 1933. 28.5" H X 23" W.

21 Nancy Hale, 1939 (signed and dated LL).

27" H X 19.5 " W

22 Nancy Hale (c. 1945-50).

20" H X 18" W.

23 Mary Welby Hardin, the artist's great granddaughter. Study for portrait. 1962.

28" H X 22" W

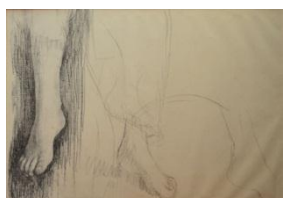


.24 Self Portrait.

20" H X 14" W.

25 Preliminary sketch of feet for the portrait of Mark in Overalls.

19" H X 24" W.



26 Norah Hardin, the artist's great granddaughter. Study for portrait, 1961.

29" H X 23" W;

27 Preliminary sketch for portrait of Norah Hardin. 1961. 10 ¼" H X 8" W. (There is an additional preliminary sketch in the Sophia Smith Collection. The poses for both of these sketches differ from the eventual portrait.)

28 Rosalie Janelle Hardin, the artist's great granddaughter. Study for portrait, 1959.

25" H X 21" W

29 Taylor Hardin (head and shoulders). 22.75" H X 21" W.

***Landscapes and Still Lifes:***

30 Buckthorn, snow scene with tree branch in foreground and cottage in background.

29" H X 23" W.

31 Church Steeple.

29" W X 23" W

32 Dinosaurs.

29" H X 23" W.

33 Winter Snow Landscape, with column in foreground and cottage in background. Signed UR.

29" H X 23" W.

34 Woman Drinking Tea. ( Idealized woman).

22.25" H X 14" W.

\*Before and after photos of dramatic restoration

35 Head and torso from a photograph which is now part of the Sophia Smith Collection. The drawing is contained in the original frame with a black and gilt hand painted oval surrounding the image painted onto the glass.

Framed: 12" H X 11.5" W. NB: additional research required for subject identification.



## Ellen Day Hale

### *Paintings (7)*

36 Before the Bath.

Oil on canvas, 23.5" H X 17.5" W; Framed: 25.5" H X 19.5" W.



37 Still life of Cloth Draped over Chair Back with Ceramic Pot of Artist's Brushes.

Oil on canvas, 23.5" H X 18" W.

\*Ceramic pot

\*Striped cloth



38 Chrysanthemums. 1889. Signed E.D. Hale and dated on artist's label.

Oil on canvas, 18" H X 15" W; Framed: 20" H X 17" W.

39 Vegetable Still Life. Signed EDH 1919.

Oil on canvas, 15" H X 28" W.



40 The Window. Still life with tiger lilies in Chinese jar and candlestick. 1932. Signed and dated LR.

Oil on canvas, 23" H X 17.5" W.

41 Woman Beside Koi Pond.

Oil on canvas, 19.5" H X 11.5" W; Framed: 22.5" H X 14.5" W.

Preliminary sketch (Boston Athenaeum Collection)

and photograph (Sophia Smith Collection)



42 Young Girl (head and torso). Unfinished with some damage.

Oil on canvas, 23.5" H X 18" W; Framed 25" H X 19.5" W

43 Pochade of grey horse in twilight from studio of Ellen Day Hale (she did many such horses; this is unsigned)



### *Etchings (5)*

44 Boy Playing Flute in Crook of Tree. 1888. Signed and dated.

14.5" H X 8" W.

45 Bicycle Calendar. 1896. Signed, titled and dated.

5" H X 16.75" W.

46 Having Tea. Drypoint with hand-coloring.

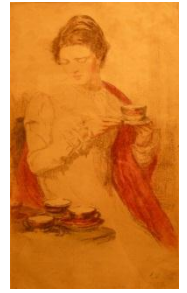
11.75" H X 7" W.

47 Hooded Female Figure.

11.75" H X 7" W.

48 Woman in Black Cloak.

11.75 H X 7" W.



## Philip Leslie Hale

### *Oil Paintings (11)*

49-51 Angels: three separate pieces: one reaching upward for a star, two of angel sounding trumpet.

Murals for a church in New England.

Oil on canvas, 89" H X 20" W in narrow gilt frames.

\*There are period photographs of the artist with these works



52 Monet's Garden at Giverny (Inscribed "French Orchard" in verso of frame).

Oil on canvas, 19" H X 25.5 " W; Framed: 25.5" H X 31" W.



53 Edward Everett Hale, the artist's father. Head and shoulders.

Oil on canvas: 24.5" H X 20.5" W; Framed 29.5" H X 25.5" W.

\*Many artifacts are available which belonged to this historically significant figure, the father of EDH and PLH.



54 Old Woman and Child. Signed Paris 1897.

Oil on canvas, 43" H X 36" W. (I believe this was exhibited in the Paris Salon.)

55 Sheep Laurel in Rhode Island. Blossoms in foreground.

Oil on canvas, 18" H X 22" W; Framed: 22.5" H X 26" W.



56 Mrs. Edward Everett Hale (mother of the artist). ca 1910. Signed LL.

Oil on canvas, 32" H X 26 " W.

57 Porch Scene (mother on ground and child on porch).

Oil on canvas, 24.5" H X 30" W; Framed: 29" H X 35" W.



58 Three Women in Landscape. A yellow period painting.

Oil on canvas, 28.5" H X 39" W.

59 Tree Row (may be by one of PLH's students.)

Oil on canvas, 18.5" H X 25" W; Framed: 23.5" H X 29.5" H.

60 Two Women under Pink Blossoming Tree.

Oil on canvas, 30" H X 25" W. 61 Self portrait. 8.5" W X 11" H.



We also have a silk embroidered memorial needlework featured as a background object in works by LWH. It was worked by Lucy Everett Durivage of Boston for her father Rev. Oliver Everett (1752-1802). It features two women in classical attire on either side of an obelisk inscribed to Oliver Everett.

